

## TYPICAL FACINGS FOR STEEL PIPE FLANGES

Nominal Pipe Size	Outside Dia.						Inside Dia.		Ring Joint	
	Raised Face Large	Small Male	Small Tounge	Large female, Large	Small Female	Small Groove	Large Tounge Small	Large Groove Small	Pitch Dia,	Depth of Groove
	A	B	C	D	E	F	G	H	P	L
1/2	1 3/8	23/32	1 3/8	1 7/16	25/32	1 7/16	1	15/16	These Dimensions Vary With The Flange Pressure Rating.	
3/4	1 11/16	1 5/16	1 11/16	1 3/4	1	1 3/4	1 5/16	1 1/4		
1	2	1 3/16	1 7/8	2 1/16	1 1/4	1 15/16	1 1/2	1 7/16		
1 1/4	2.5	1 1/2	2 1/4	2 9/16	1 9/16	2 5/16	1 7/8	1 13/16		
1 1/2	2.875	1 3/4	2 1/2	2 15/16	1 13/16	2 9/16	2 1/8	2 1/16		
2	3.625	2 1/4	3 1/4	3 11/16	2 5/16	3 5/16	2 7/8	2 13/16		
2 1/2	4.125	2 11/16	3 3/4	4 3/16	2 3/5	3 13/16	3 3/8	3 5/16		
3 *	5	3 5/16	4 5/8	5 1/16	3 3/8	4 11/16	4 1/4	4 3/16		
3 1/2	5 1/2	3 13/16	5 1/8	5 9/16	3 7/8	5 3/16	4 3/4	4 11/16		
4	6 3/16	4 5/16	5 11/16	6 1/4	4 3/8	5 3/4	5 3/16	5 1/8		
5	7 5/16	5 3/8	6 13/16	7 3/8	5 7/16	6 7/8	6 5/16	6 1/4		
6*	8 1/2	6 3/8	8	8 9/16	6 7/16	8 1/16	7 1/2	7 7/16		
8*	10 5/8	8 3/8	10	10 11/16	8 7/16	10 1/16	9 3/8	9 5/16		
10	12 3/4	10 1/2	12	12 13/16	10 9/16	12 1/16	11 1/4	11 3/16		
12	15	12 1/2	14 1/4	15 1/16	12 9/16	14 5/16	13 1/2	13 7/16		
14	16 1/4	13 3/4	15 1/2	16 5/16	13 13/16	15 9/16	14 3/4	14 11/16		
16	18 1/2	15 3/4	17 5/8	18 9/16	15 13/16	17 11/16	16 3/4	16 11/16		
18	21	17 3/4	20 1/8	21 1/16	17 13/16	20 3/16	19 1/4	19 3/16		
20	23	19 3/4	22	23 1/16	22 1/6	22 1/16	21	20 15/16		
24	27.14	23 3/4	26 1/4	27 5/16	26 5/16	26 5/16	25 1/4	25 3/16		
DIMENSIONS are shown in inches				LAP JOINT flanges are commonly furnished without a raised face, the rolled lap on the pipe itself forming a raised contact surface see (fig.2)						
GASKET SURFACE is indicated on the facing sketches by "GF"										
1/16" RAISED FACE (fig.1) is standard for 150 and 300lb. Welding Neck, Slip-On, Screwed and blind flanges, and is included in the flange thickness				FINISH: Raised Face, Male, Female or Tounge Face. Groove face-grooves over 1" in width, as above; 1" wide or less, smooth finish. Ring joint-smooth finish.						
1/4" RAISED FACE (fig.1) is standard for 400lb. And heavier welding Neck, Slip-On, Screwed and Blind Flanges, and is NOT included in the flange thickness.				TOLERANCE of ± 1/64" is allowed on inside and outside diameter on all facings.						
* = Large female and large groove class 150 in these sizes will be full faced to O.D. of flange.										

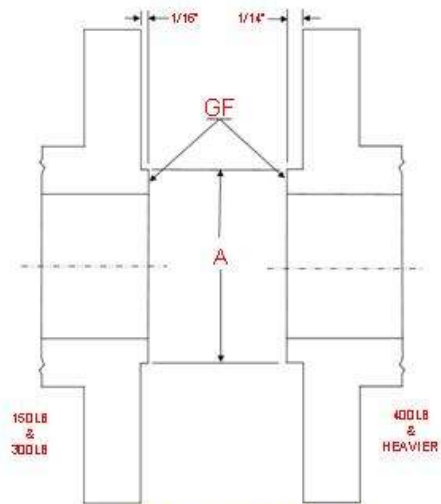


FIG. 1 (RAISED FACE)

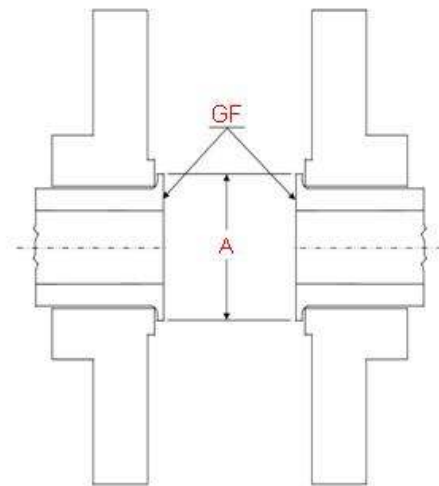


FIG. 2 (LAP JOINT)

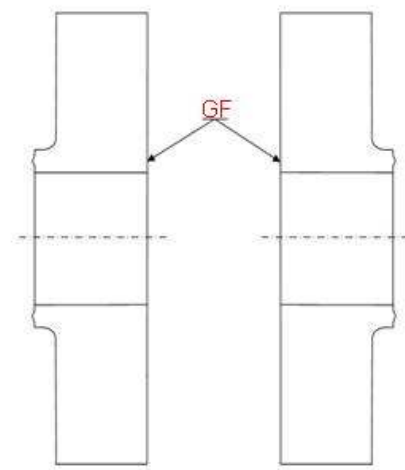


FIG. 3 (FLAT FACE)

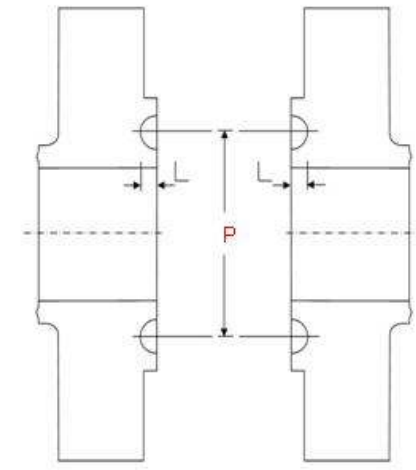


FIG. 4 (RING JOINT)

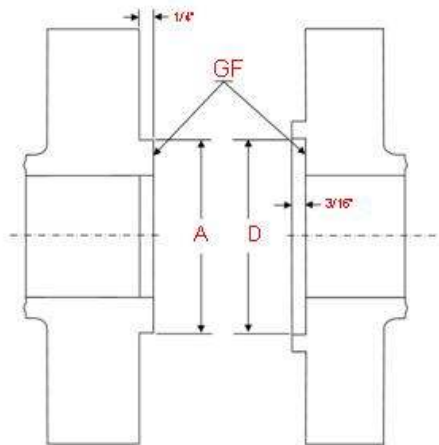


FIG. 5 (LARGE MALE & FEMALE)

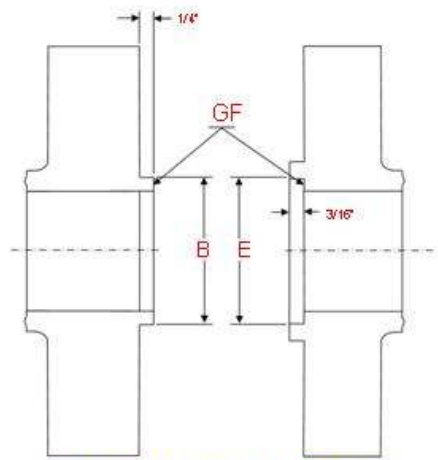


FIG. 6 (SMALL MALE & FEMALE)

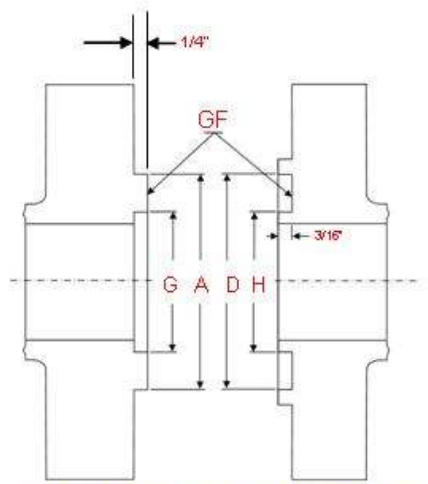


FIG. 7 (LARGE TONGUE & GROOVE)

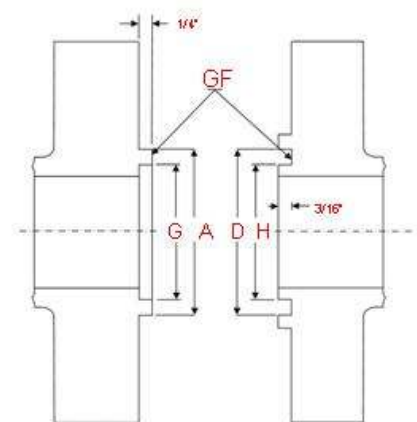


FIG. 8 (SMALL TONGUE & GROOVE)